

# TV Highway History



## TV HIGHWAY CORRIDOR PLAN

... TVHIGHWAY.ORG

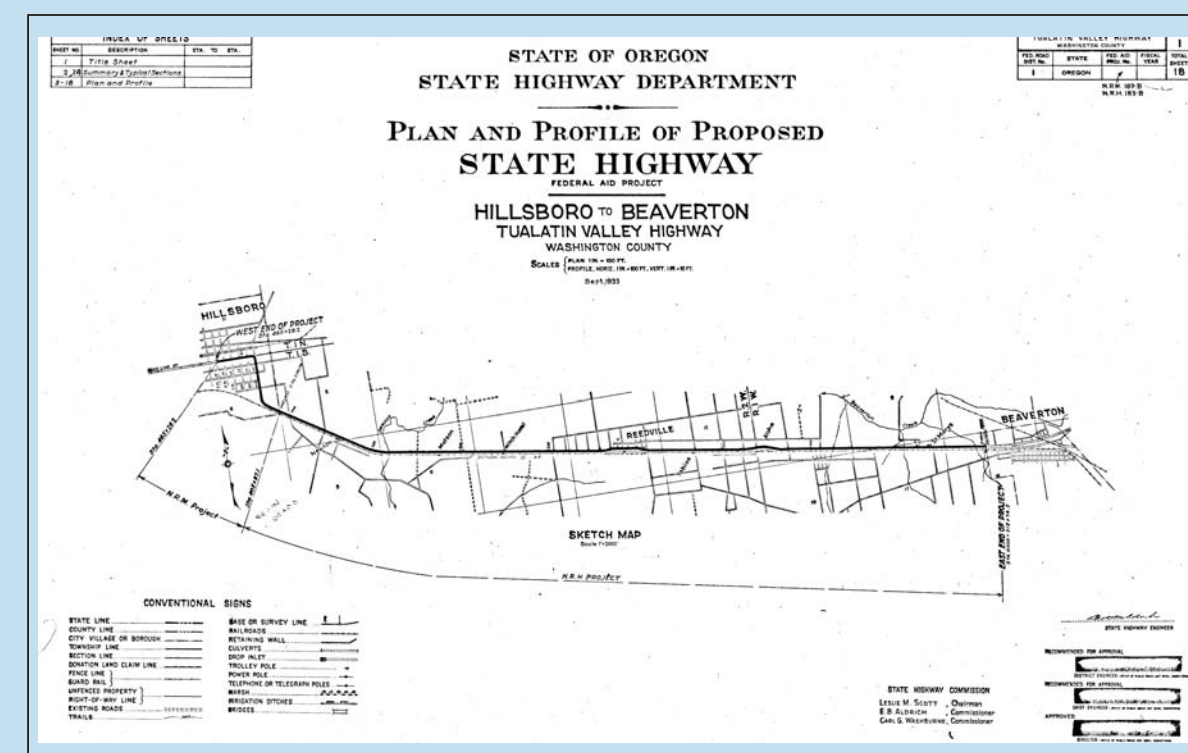
Portland & Western's railroad track from Lombard Ave in Beaverton to Hillsboro is part of the old Oregon Central Railroad Company. In 1867 the Oregon Central Railroad Company built a line toward Forest Grove and McMinnville.

1867



Tualatin Valley Highway becomes part of the State of Oregon Highway System

1917



Federal aid project to pave Tualatin Valley Highway from Hillsboro to Beaverton is initiated

1933



Intel Aloha Campus opens near 198th Avenue on Tualatin Valley Highway

1976

From 1970 to 1989, traffic signal installations, paving, sidewalk improvements and bus stops were added along Tualatin Valley Highway.

1989

TriMet bus line 57 is changed to frequent service



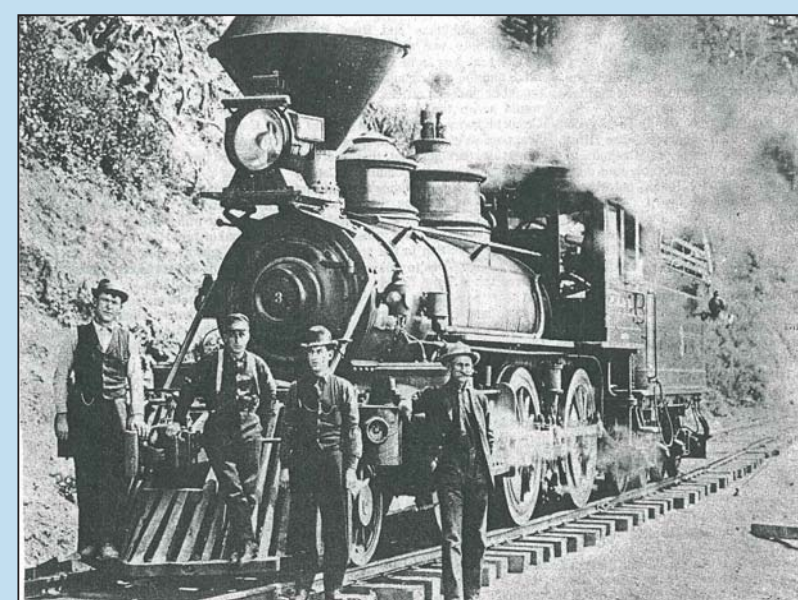
2004



178th Avenue crosswalk is updated with a pedestrian- activated flashing beacons

2010

After a number of physical and financial problems, the first 20 miles of Railroad from Portland to Hillsboro were completed December 18, 1871.



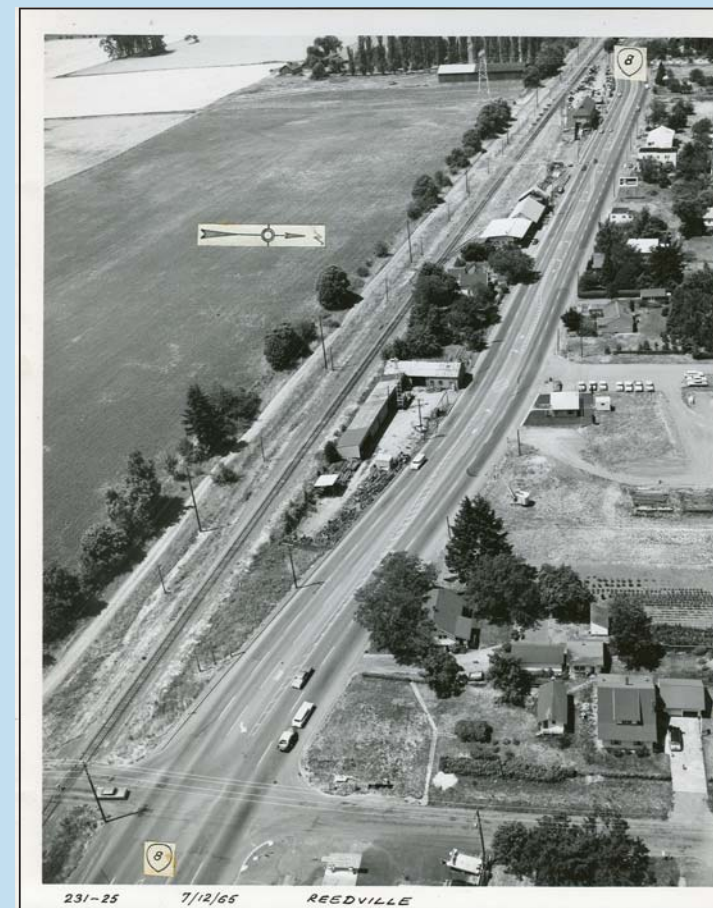
1871

From 1917 to 1919 Tualatin Valley Highway from the Multnomah County line to Forest Grove was paved in a joint project between the State Highway Department and Washington County.

1919

From 1955 to 1956 Tualatin Valley Highway is widened from 2 to 5 lanes.

1956



1965 - Tualatin Valley Highway at 209th Avenue in Reedville

1965

Tualatin Valley Highway is elevated adjacent to Tualatin Valley Nature Park

1981



Portland & Western acquires the Tillamook District (34 miles long from Willsburg Junction to Banks) from Southern Pacific Railroad

1995

June 2010 - Upgraded bus stops, sidewalks and pedestrian improvements are constructed in 17 various locations along Tualatin Valley Highway



178th Avenue traffic signal under construction

2011